



What's Hot

GFWC of Rhode Island

July – August 2010

President Debbie Capuano

This past May I was installed as your President for the 59th administration of GFWC of RI. I want to thank you for being an active member of a GFWC club during this 2010-2012 administration. Already hard at work,



I attended the GFWC 119th Convention, held in Omaha, Nebraska "Cultivating Our Future. There were instructive educational workshops, informative business sessions, inspiring speakers, awesome award presentations and countless opportunities to share with other clubwomen all designed to highlight the development of GFWC- *Dedicated to Community Improvement by Enhancing the Lives of Others Through Community Service*. One of the convention speakers told us that we all love to think and talk about change – but when it comes to changing - we get uncomfortable. So let's make a resolution to try to get comfortable with taking action and make the changes needed to accomplish all the wonderful goals we have for this administration. These two years will go by too quickly – so we don't want to waste a moment.



Changes.... I am so excited about the direction GFWC is going with these community service programs. The 2010-2012 GFWC Community Service Programs {CSP} (previously known as the departments) have changed slightly.

Partnership Projects – "those projects that were developed on the national level with national partners and implemented in the local club's community"

Collaboration Projects – "had no involvement from or with any partner organization." any project that is not a GFWC-designated national partner, as identified in the 2010-2012 Club Manual, Guide to GFWC Community Service Programs should be reported as a Collaboration.

On July 8th the 1st Executive Committee meeting was held, plans for this administration were discussed. On July 10th the 1st Board of Directors meeting was held, exciting ideas were exchanged between all who attended.

And looking forward we have some exciting events coming up.

GFWC of RI Leadership Training, August 21st, from 9am-1pm - EBC Center, 821 West Shore Rd. Warwick.

Who should attend?

State officer, state chairmen, club president, vice-president, membership/public relations chairman, secretary (or representative of)

101st GFWC New England Region Conference (NERC), September 24-26, at the Crowne Plaza, Warwick, RI. Every club woman should have received the Call as it was mailed out to all Rhode Island Clubwomen last week. The deadline for GFWC NE Region Conference reservations will be September 3rd. The GFWC NERC Chairmen Donna Gibb and Ethel Dellasandro have been very busy, plans are well under way but help is still needed please contact Donna or Ethel if you want to be part of this exciting conference.



GFWC of RI Fall State Meeting, Saturday, November 6, 2010 – details to follow.

Ancient philosophers and scientists agree: strong social ties are the KEY to happiness. You need

close, long-term relationships; you need to be able to confide in others; you need to belong; you need to get and give support. Studies show that if you have five or more friends with whom to discuss an important matter you're far more likely to describe yourself as "very happy."

Not only does having strong relationships make it far more likely that you take joy in life, but studies show that it also lengthens life (incredibly, even more than stopping smoking), boosts immunity, and cuts the risk of depression.

Tips for making new friends. Show up, Join a group, Say nice things about other people, Set a target, Make an effort to smile, Make friends with friends-of-friends



Finally, I want to thank you for the honor and privilege of serving as your GFWC of Rhode Island President.

Yours in Federation Service, *Debbie*

President-elect Madeline Perreault

Welcome to a new Club Year! Although it is only August, plans and strategies are being developed in order that this administration (2010-2012) will be the best ever. Now is the time for Club Presidents, Program Chairmen, and Committee leaders to be working on their plans for the new administration as well.

Nationally, GFWC has redefined some of its organizational structures to better assist the local clubs. The former "Departments of Work" have been re-titled as "Community Service Programs": Arts, Conservation, Education, and Home Life remain the same (although with new ideas within those programs). Two new areas have been added: International Outreach (formally International Affairs) and Public Issues (combining Public Affairs, Public Relations and Legislation). This leader will endeavor to expand on these new titles as the year begins; collectively we can refer to them as CSP.

New titles can lead to some bewilderment and the meaning of "program" and "project" is sometimes interchanged. A "program" in the

GFWC of Rhode Island Leadership Workshop Saturday, August 21, 2010

9 am – Noon

**Elizabeth Buffum Chase Center
821 West Shore Road
Warwick, RI 02886**

Who should attend?

State officer, State chairmen

**Club President, Vice-president, Membership/Public Relations Chairman,
Secretary (or representative of),
or any aspiring leaders**

**RSVP: by August 18 to Alexandra Hahn
at Ahahn@textron.com or 401-521-1482**

GFWC sense means a long-standing umbrella title that describes an on-going group of activities. A "project" refers to a single activity under a "program" even if there are multiple parts; usually within a specified time frame. For example: a Club (this year) holds a book fair to fund its scholarship for women advancing their education. The Club also holds an essay contest to determine the winner of this scholarship. Creating, funding and issuing the scholarship are all part of the Club's Scholarship Project. This project comes under the overall Education Program serving to support, improve, and advance education. Because not every Club is organized by program and/or project or have chairmen of each, the terms can get confusing. These terms will become easier as the club year continues. But the clarification is important as it influences Reporting (in January).

In addition, GFWC has subdivided "projects" further by instituting "Partnership Projects" and "Collaboration Projects". Partnership Project - "those projects that were developed on the national level with national partners and implemented in the local club's community". Example: a local club creates an intergenerational book club using funds received from the Education Literacy Grant provided by Proctor and Gamble (see Clubwoman Magazine, July 2010).

Collaboration Project - "had no involvement from or with any GFWC partner organization". Example: a local Club works with the community woman's shelter to educate teens on dating violence. Any project that is not a GFWC-designated national partner, as identified in the 2010-12 Club Manual, Guide to GFWC Community Service Programs should be reported as a Collaboration.

Hopefully, this information will become clearer as we work through our club years. The GFWC Club Manual will be available in August - both on CD and in print. Club Presidents will receive a copy through the mail (snail mail). Copies are also available on-line through www.gfwc.org/marketplace or call 800-443-GFWC (4392). Or log on to www.GFWC.org/ClubManual.

Feel free to connect this leader by email (MAPerreault1@cox.net) or by phone (401-294-8570). I look forward to be inviting to club meetings and other club activities.

Nothing can stop the woman with the right mental attitude from achieving her/ his goal; nothing on earth can help the woman with the wrong mental attitude.

Thomas Jefferson

101st GFWC New England Region Conference September 24-26, 2010 Crowne Plaza Hotel, Warwick Clubology 101

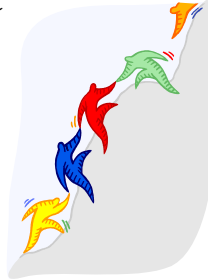
Join us as we broaden our skills of volunteerism.
The Clubology 101 courses being offered are just what you need to improve, sharpen and refine your knowledge of how to help yourself so that you will be better able to help others.

Come for the entire conference or just one day.
We'd love to see you there.

Vice-president Janet Trombetti

As we begin this new administration, I'd like to remind all club presidents and membership chairs that I am available to hold a mini membership workshop with your club. Please contact me to schedule a day and time.

Membership does matter – without new members our current members tend to take on too many responsibilities. This can lead to dissention among club members, attrition of membership and member burn out. Following is one of many ideas I will be sharing with you during the 2010-2012 administration.



Create a Business Plan for Membership Growth

The 10 steps below will help your club plan for membership success.

- 1. Appoint a Club Membership Chairman.** Ideally, this would be your VP of Membership or someone in your club that has a passion for membership and has an understanding of the workings of the club and Federation.
- 2. The Club President or Membership Chairman should appoint at least two additional members to serve on the Membership Committee.** There is a lot of membership work to be done – it's a TEAM effort.
- 3. Find out how many members in the club paid dues last year.** Oddly enough, not everyone knows this most important fact. It's hard to set goals if you don't know where the starting point is!
- 4. Establish specific, measurable, attainable, realistic, and time specific membership goals.** Remember, if you lose four members, you must recruit at least five new members to achieve a net increase.
- 5. Update your club profile. Or, if none exists, write one and use it!** It's important to give a

prospective member a professional looking brochure explaining the programs and projects that define you as a club. With computers, it's easy!

- 6. Update your directory or roster and be sure to provide updated contact information for your club members to your state federation.** An obvious annual and ongoing job. Correct membership records will help track membership gains and losses, club membership anniversaries, as well as provide names and addresses to re-contact members that drop membership. Situations change and they may be ready to rejoin.
- 7. Conduct a recruitment event.** Recruiting is an ongoing activity; however, it's a good idea to have an event with a strictly membership focus at least once a year.
- 8. Start or continue to issue a club newsletter and establish and maintain a club website.** Communication is absolutely vital and these are two very useful tools. **Note:** Send your club information (newsletters, pictures of club events, announcements, etc.) to Janice Adler at jladler@aol.com for insertion on your club's webpage on the GFWC RI website.
- 9. Institute a system to ensure that members attend and are involved in club meetings and activities.** Always let members know that they are important to your club.
- 10. Reach out to another club that's in trouble or one that's just getting started.** Membership is a BIG job within your own club, but it's also important to let others know how great GFWC is, and we need to: **SHARE THE EXPERIENCE!**

Reminder:

There will be a mini membership workshop at the Leadership Training on August 21, please plan on attending as I'm sure you will leave with exciting ideas to take back to your clubs.

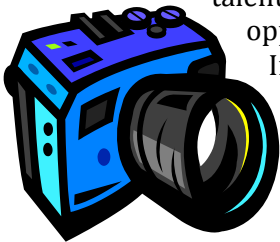


The Arts Sandy Pannone

The Arts Community Service Program is designed to enable members to create and contribute to art education and activities in their communities as participation in the arts helps raise public consciousness and connects members and clubs with their communities.



To encourage GFWC members to further their own artistic expression and recognize their artistic achievements, GFWC sponsors several contests in the areas of photography and writing. GFWC also presents several awards including "The World in Pictures," which encourages members to capture the beauty of the world and people around them and "GFWC Volunteers in Action," which asks members to demonstrate their activities during the year through photography. Winners of the "A Year in Pictures" contest are featured in the annual GFWC calendar, which allows them to demonstrate their talent and support a fundraising opportunity for GFWC.



Information regarding the GFWC Photography and Writing contests is in the 2010- 2012 GFWC Club Manual under Awards, Contests, and Grants.

PROGRAM GOALS AND OBJECTIVES

The goals for the Arts Community Service Program are listed below in order to assist you in measuring project success and positive change in your communities. The listed objectives further outline how we can build projects that support these goals.

Goal 1. Create and contribute to arts education and activities in their communities.

Objective 1. Engage our communities through the arts by raising awareness of the unlimited benefits created through arts programs.

Objective 2. Educate others on and promote the achievements of women in the arts.

Objective 3. Develop art opportunities for people with disabilities and foster youth community art.

Goal 2. Engage GFWC members in developing and enjoying creative arts as a method of self expression.

Objective 1. Recognize unique art programs in individual clubs which highlight their successes and are an inspiration to members.

Objective 2. Recognize the unique artistic talents of GFWC members via awards and contests sponsored by GFWC.

Call to Action

- Educate Yourself
- Inform Others
- Create Change

AWARDS

A \$50 award will be given annually to one club in the nation to recognize creativity in implementing an effective Arts Community Service Partnership Program.

** for more details consult the GFWC Club manual*

Conservation Roberta Bianco

With all that has been happening recently in the Gulf, conservation should be on everyone's mind. We all do our share with recycling and other efforts in our own homes, and now you are being asked to think on a grander level.

The goals of the Conservation Community Service Program (CSP) are: 1. to enhance our environment for healthier living, and 2. to bring GFWC to the forefront by way of conservation programs. These goals can be met through community efforts and through partnering with national conservation groups.



To start your clubs on the road to projects and programs, begin by educating yourself. Assess your community's conservation needs regarding beautification, preservation of natural resources, and litter and waste handling. Work with community groups such as school officials, scouts and other youth groups. Invite experts to speak at meetings.

There is so much information in the 2010-2012 GFWC Club Manual. I encourage club presidents to use it as a source throughout the club year for information on Collaborations (serving our communities) and Partnerships, GFWC organizations that operate at the national or international level.

Of course, many clubs have on-going conservation projects with gardening efforts at shelters and maintaining historic cemeteries for example. And, of course, we do not ask you to abandon successful projects. We are also asking you to try something new.



There is a listing of important dates related to conservation in the Club manual. Most are early in 2011. The first date of significance is November 15, which is America Recycles Day. Think about how your

club can serve your community on that day. Remember to label donated items or handouts with "Courtesy of GFWC and {GFWC Club Name}.

Finally, I encourage all clubs to share successful programs and projects with other clubs. In this way, GFWC of RI can make a big difference through conservation efforts.

Education

Beverly Prestage

Focus on Literacy Club Grants

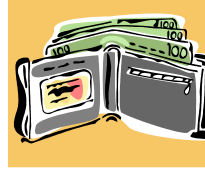
Literacy club grants of up to \$150 are available to GFWC clubs and funds may be used for purchasing books for tutors to use, providing books to kids and/or a variety of other literacy needs. Contact GFWC for an application. See the application for a number of other suggestions.



Home Life

Susan Porth

While you are on your summer breaks, you can start thinking of new and exciting activities for the later part of the year. Plan on 1 or 2 activities to help your members or your community.

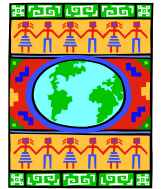


There are as many health and financial issues that you can introduce or update your members. If you need ideas, let me know and we can work out something your members may be interested in. Stay cool.

International Outreach

Ruth Bennett

The International Outreach Community Service Program is designed to enable club women to become better world citizens through advocacy, education, and action, which will in turn affect change in and for our global friends and their communities.



It will be my pleasure to visit each of the Rhode Island clubs to give an overview of the programs that GFWC partners with or to bring materials concerning any one program which a club would like more information on.

Because of the instantaneous information available to us through our current technology, and the great opportunities to travel worldwide, our world seems to get smaller. Things that happen halfway around the world, can affect our lives here in Rhode Island. I hope that each club will reach out to support our global community this coming year.

Communications

Janice Adler

The deadline for the next issue of *What's Hot* will be **Monday, October 4, 2010**. Please make sure to send me the names and address of new members to insure they are on the mailing list.

Leadership

Alexander Hahn

GFWC of RI Leadership Training

One advantage of belonging to an organization like GFWC is having the opportunity to improve oneself. At the Federation level there is the LEADS program (Leadership, Education and Development Seminar). Here in Rhode Island, we are offering our own Leadership Training.

The plan is to hold Leadership Training throughout the year – starting with a half-day session this August. Shorter classes and presentations are planned for the State Meetings, and there will be another stand-alone training day next year.



This first training session is primarily for all club leaders in this administration, though it is open to all RI club women. It will include sessions on:

- ✓ What Makes a Good Leader?
- ✓ Public Speaking
- ✓ Communication: Getting Your Message Out
- ✓ Conducting a Meeting
- ✓ Membership
- ✓ Community Service Programs
- ✓ Managing Time
- ✓ And more

There will be plenty of time during this training to answer all of your questions about running a club.

Please join us for a training session that will teach, inspire and connect you with other club women.

Saturday, August 21, 2010
EBC Center
821 West Shore Rd, Warwick,
RI 02886
9:00 AM – 1:30 PM

RSVP: by August 18 to Alexandra Hahn
at Ahahn@textron.com or 401-521-1482

There will be a light breakfast served at 8:30 AM and lunch will be provided.

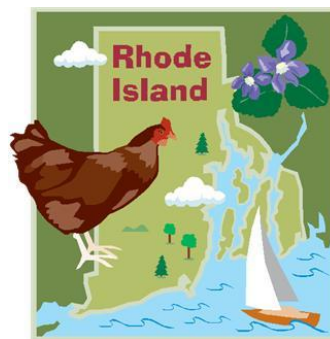
This administration all clubs, junior and general, have been asked to participate in the Junior Special Project - Advocates for Children. After reading what follows, many RI club women will probably say, "We already work in that area." So, see, you are halfway there.

I urge club presidents to check the GFWC Club Manual and share the wealth of information (16 pages worth) about this program with your members. There are examples of successful projects from around the country as well as ideas for both Partnership and Collaborative program ideas and resources.

In general, the goals of this project are to educate, advocate, and engage in projects concerning the well-being of children via health, social and safety programs. Advocates for Children encourages GFWC members to become active advocates for children by working to protect children from harmful situations, encouraging healthy lifestyles, supporting and providing best practices for emergency care, and preventing substance abuse and teen suicide.

Meetings

Mary D. Irons



Tour "Little Rhody" with GFWC

The 2010-2012 GFWC of RI Administration plans to bring its members to meetings in parts of Rhode Island that perhaps have never been visited by them before. Our meetings will again be hosted by the various clubs at venues close by. (But then how far away is anything in RI?)

All meetings will be Saturday luncheon meetings and will be priced between \$28 and \$30. Our Board of Directors has decided to underwrite any additional expenses not covered by the luncheon

fee. So the State Meetings will be a member benefit that should be well attended and enjoyed.

Our first meeting will be held at the Warwick Museum of Art (Saturday, November 6, 2010) which was founded by the then Warwick Junior Women's Club in 1976. We will be able to tour the facility and any exhibits present at that time. A catered luncheon will be held after the meeting with time to enjoy this lovely facility.

GFWC Signature Project Domestic Violence Awareness & Prevention Judy Earle

The membership of the GFWC voted to establish a signature project – one that would continue through the changes of administration and become known as a “special interest” of GFWC. The signature project is Domestic Violence Awareness and Prevention. As is stated in the GFWC Handbook, “the aim of the GFWC Signature Project...is to increase member understanding about and involvement in programs to decrease domestic violence in communities and across the nation.”

How fortunate for the GFWC of RI to have been way ahead of the curve on this one! We've been working on the issue, supporting programs and partnering with our local domestic violence agencies for many years. We know about the problem, we know where the resources are in every part of this state and we have shown our commitment to ending domestic violence by offering a Day of Service, collecting items for the shelters' wish lists, becoming a major sponsor of DVAM in October and many other activities.



Equally important is the fact that our domestic violence agencies statewide and the RI Coalition Against Domestic Violence already know who WE are. They know to whom they can turn for extraordinary volunteers in this movement. They appreciate our efforts, our reputation and our expertise.

GFWC has listed important dates around which clubs can plan activities. Coming up this fall are:

- September 13: Grandparents Day, a day to raise awareness of elder abuse (see EBC Center for materials.)
- October: Domestic Violence Awareness Month (become volunteers at your local agency's events.)
- October 24: Make a Difference Day
- November: National PTA Child Safety and Protection Month

The GFWC Bristol County Women's Club is cited in the handbook as having planted and dedicated a memorial garden in tribute to those who have lost their lives due to domestic violence, as well as their other many activities. Way to go, Bristol! We've all done so much over the years – let's make sure that this year, the GFWC knows all about it!

Please call me if you have any questions! Thanks.
Judy Earle 736-5707 jearle@ebchouse.org

Juniors' Special Project: Advocates for Children Roberta Bianco

We in RI are very fortunate to have Prevent Child Abuse RI as a source of projects and valuable information. Contact Kate Begin, the Executive Director, at 728-7920. Her e-mail address is kbegin@preventchildabuse-ri.org. Kate is very excited about partnering with GFWC of RI clubs. Work with PCARI will fall under the reporting area of Collaboration. There is an event coming up on October 5th - part of the Step up for Kids campaign for which she is seeking volunteers. Other campaigns are the Pinwheels for Prevention, planting a Pinwheel garden, and a Pennies for Prevention Campaign. Contact me or Kate for more specific information about these projects. She is also open to ideas from clubs, so feel free to approach her with your ideas for projects. As always, clubs are urged to share their ideas with other clubs to help make communities all over RI better for our children.



When I was the Junior Director from RI, the then three junior clubs were very involved with this project. What is more important than making a better place for our most precious resource - our children? I look forward to working with all RI clubs.

Some important dates:

- August 12 - International Youth Day
- September - Hunger Action Month
- October - Children's Health Month
- October 4 - Child health Day
- October 5 - (PCARI Step up for Kids campaign event - place TBD)

GFWC New England Region Conference Donna Gibb & Ethel Dellasandro

We Need Your Help

There still are plenty of things to do and we need plenty of members to help with the 101st GFWC New England Region Conference. Please sign up now. The diversity of our needs is sure to allow you to volunteer for something suited just for you. Here are just a few.



Volunteer Coordinator

This Clubwoman will check in volunteers and coordinate assignments.

Setting up

This clubwoman helps out at the hotel before the event.

Greeter

The greeter stands near the registration table to welcome guests and direct GFWC members with questions to the appropriate person or place.

Registration

The registration desk will be in charge of checking a member's name off of a provided list. Handing them a welcome bag and, if needed referring them to a greeter to answer any questions they might have.

Door Monitors

Doors are closed to the meeting room during keynote speeches. The door monitor will be

responsible to open the door when appropriate and/or collecting meal tickets as clubwomen enter the room.

Door Prize Runner

The runner walks around the room and presents the winning member with their door prize.

Exhibitor

There will be a table in the marketplace that will be selling items for GFWC of RI. Clubwomen are needed to "manned" our table. Shifts of two hours are preferred but, less will also be appreciated.

Please contact Donna Gibb at djgibb@cox.net (401)647-0259 or Ethel Dellasandro at ejdri@hotmail.com (401) 942-6683 with any questions you may have.

Door Prizes

Door prizes for Friday night will be photographs of Rhode Island. If you have digital photos you would like to share please e-mail them to Janice Adler at JLAdler@aol.com. Put NERC photos in the subject line.



Raffle Basket

The Region will be having the State Baskets as a fundraiser for New England Region. Each state is requested to contribute a basket with a value not to exceed \$101.00. The theme of the baskets is to coordinate with the Conference. The Rhode Island basket's theme is Relaxology. We are looking for items associated with relaxing: scented candles, hand lotions, bubble bath, etc. If you have any items you would like to donate to the basket, please bring them with you to the Leadership Workshop on August 21.



Day of Service

Roberta Bianco & Betty Challengren

This club year we will be holding our fifth annual Day of Service in April 2011. We started out small, but both interest and participation have grown, and last year five of our local clubs participated.

For the 2011 Day of Service we will focus on the homeless as well as domestic violence. The RI Coalition for the Homeless agencies (RICH) includes the six domestic violence agencies with which many clubs have a working relationship.

Please think about how your local community will best be served through RICH and/or RI Coalition Against Domestic Violence (RICADV). I would like to know what each club's plans are so that GFWC of RI, along with the two coalitions, can best be of help to you. We want this to be the BEST Day of Service yet!

Please contact me with any question you have and I will do my best to get you the needed information.

GFWC Bristol County Women's Club Sandra Pannone, President

We had a phenomenal year last year and have set the bar high. Once again, we will begin this club year with a 'giving party' and Providence Intown Churches Association (PICA) will be the recipient of whatever food staple items we receive and I am sure it will be bountiful. We will combine the 'giving party' with an Act in Oct. This will provide a great opportunity for those from the community that gave so graciously last year to learn more about who we are, what we do and whom we help. November will find us providing Thanksgiving for the clients of the Women's Resource center that are living in the safe house. Some of us have been knitting/crocheting and will donate scarves to PICA. Last year they used the scarves as Christmas presents for the clients. The December Wish Tree will once again hold the wishes of the children of the clients of the Women's Resource Center. I wonder what we will do in 2011?



GFWC Cranston Community Women's Club Ethel Dellasandro, President

We sponsored a girl scout to attend Girl Scout Camp this Summer. Once again, the Friday before Mother's Day, our members visited the residents at SStarbirth and brought gifts to the Mother's and their children. We celebrated our Annual "International Night" and enjoyed good food and learned about customs and lay of the land, places of interest; etc for Israel, China, Holland, Italy, Hawaii, England, Poland and Armenia. We also got to see clothes and artifacts, pictures, etc. The food was fantastic and members brought their recipes for the dishes and desserts that we shared.



Our Day of Service was held on April 24, 2010 and our members brought over 300 articles of clothing, small appliances, furniture, along with non-perishable food to the RI Resource Donation Center for Cranston Community Action Program (CCAP) of Cranston. CCAP, stores their donations there as their building on Doric Ave., Cranston, RI does not have that much space to store the donations. Our Club works with CCAP throughout the year. These donations will be given to the homeless.

Several of our members went to the State House during Federation Week and attended the Senate Session. Senator Hannah Gallo presented GFWC CCWC with a proclamation, again this year. In May, we will be visiting the residents of SStarBirth, again this year. We visit them on the Friday preceding Mother's Day and bring presents for the Mothers and Mother's-to-be and their children. We've been doing this for many years now and they look forward to our visits. Our members usually stay and enjoy some snacks and soda with them and just chit chat with them. We also support their efforts throughout the year.



We gathered to work in the Historical Cemetery we adopted. It really looked nice when we

finished. In June we assisted the ALS of RI with their Night of Hope, which was held at the Kirkbrae Country Club this year. We have been assisting them for 14 years now. We help them with their Silent Auction and handle Registration for the event. We had two wonderful speakers from Albion Court, which treats and houses Alzheimer Patients. We are busy getting ready for the GFWC NER Clubology 101, since RI is the host state this year. Our last meeting in June was held at the Crow' Nest Restaurant and a good time with great food was had by all.

GFWC Pawtucket Woman's Club Ruth Bennett, President

With summer half over; we are looking forward to our "Strictly Social" day at the pool. Our member, Eunice Brooks, has invited us to a cookout and swim party at her home. Since it has been a very hot summer, it sounds like a fabulous way to cool off.

The Board has met and set up our programs for the coming club year. It should be a very productive year. At our first meeting we will be creating thank you cards for the Rhode Island veterans to be distributed on Veterans Day.



The members have also been busy collecting articles for the center pieces for the Saturday evening banquet at the GFWC New England Region Conference. We are partnering with the GFWC Bristol County Women's Club to shower PICA with items for the homeless.

Our club has also been working on collecting things for the Welcome Bags from companies in the area. I want to thank our members for the good work that they have done, as well as the items given us from several other clubs.

We hope to have a great showing of support from our members at the GFWC New England Region Conference.

GFWC Wampanoag Women's Club Paula barman-Duarte, President

The GFWC Wampanoag Women's Club installed its slate of officers for next year in a ceremony and dinner at Wannamoisett Country Club in May. Last year's co-president, Nancy Amore will again take the reins and will be assisted by new member, Paula Braman-Duarte. Also during this last meeting we continued what has become a regular meeting tradition by holding a raffle for a small door prize, the proceeds of which go to a selected local charity; we have been supporting a food pantry. Plans were also finalized at that meeting for a contingent of members to attend South County's wonderful "Book and Authors Luncheon" in July.



(Update: We had two tables of members and their guests who immensely enjoyed the day: spectacular views, lovely lunch, and energizing talks by three remarkable women authors.)

Midway through the summer we are urging membership to attend (and hopefully to volunteer) at the GFWC New England Region Conference in September. Looking to the fall, our on-going work with Sister Holly at McAuley Village in Providence remains a top priority. Not only has this been a mutually beneficial relationship but we also see it as a jumping off point to further accomplish the goals of the GFWC Signature Project: Domestic Violence and Prevention programs. Lastly, as we finalize activities for the coming year we remain committed to continuing the many decades of activism at Wampanoag and toward this end we hope to work on increasing our membership numbers in order to better accomplish this. With a new state president (congrats and best of luck, Deb!), and hosting the GFWC New England Region Conference, we know it is a busy year ahead, hoping to successfully match all the state clubs in their energetic commitment to timely causes!

GFWC Warwick Women's Club

Janet Trombetti, President

Officers for 2010-2012

Janet Trombetti	President
Susan Porth	Vice President (Federation)
Roberta Bianco	2 nd Vice President (Program)
Deborah King	Treasurer
Vicki Hahn	Recording Secretary
Paula O'Neil	Corresponding Secretary

This administration's focus for the upcoming year will be on building our club's membership through constant recruitment and publicity. We'll also work toward educating our members on the history of GFWC. At each meeting we will be asking our members for ideas for recruitment and will speak on a different GFWC history point of interest.

Our club meetings will be held primarily at the Elizabeth Buffum Chace Center with two meetings to be held at the Warwick Museum of Art.

Our board will have their first meeting on August 24th to plan out the year and schedule our monthly activities and speakers.

GFWC RI Ex Club

Judy Marak, President

Rhode Island club members don't seem to stay retired very long, do they? Here's an ex state president who retired and then popped up again as president of the GFWC RI Ex Club—sort of like a puppy under a blanket. Well, I'm here to urge those members who have held positions on the GFWC of RI Board of Directors to join this low-impact, non demanding club if you haven't already. You may have already received a reminder from Past President Ann Hogan who holds this 100 years old club in her heart. *Please respond.* We are open to your suggestions regarding meeting days, times and speakers of interest. We have had some very interesting and entertaining guest speakers in our meetings which take place just twice a year, spring and fall. The dues, a mere \$22 annually, may be sent to Carolyn Traxler, Treasurer at 109 Southwinds Drive, Wakefield, RI 02879. When a date has been

set for the fall meeting the information will be sent out in a "Blast".

I would also remind Ex Club members—and all GFWC of RI members—that your presence and help is needed at the GFWC New England Region conference which we are hosting. The Call has been mailed out and it includes a signup sheet for the various positions which need to be staffed.

I have learned that past president Ann Bejma is in the hospital again and would love to get a card or note from us. Her address is:

196 Old River Road Apt. 515, Lincoln, RI 02865

GFWC State Meetings 2010-2011

Fall State Meeting

Saturday, November 6, 2010

Mid-winter State Meeting

Saturday, February 5, 2011

Annual State Meeting

Saturday, May 21, 2011

State Meeting Sites are TBA

GFWC Leadership Training

Saturday, August 21, 2010

9:00 am EBC Center, Warwick, RI

GFWC Reporting Workshop

Saturday, January 8, 2011

11:00 am EBC Center, Warwick RI

GFWC of RI Board of Directors Meetings

9:00 am – 11:00 am EBC Center, Warwick RI

Saturday, July 10, 2010

Saturday, October 2, 2010

Saturday, January 8, 2011

Saturday, April 9, 2011

All club women are invited to attend Board of Directors meetings.

GFWC News & Notes

GFWC publishes a weekly email newsletter called News & Notes filled with current information about what's happening at GFWC. You can sign up for News & Notes by visiting www.GFWC.org and entering you e-mail address in the box that says "sign up for our mailing list." The box appears on every page on the left-hand side.

NEWS & Notes



July 14, 2010

2010-2012 GFWC of RI Officers and Chairmen

OFFICERS

President	Debra Capuano	885-0077	dacapuano@cox.net
President-elect	Madeline Perreault	294-8570	maperreault1@cox.net
Vice-president	Janet Trombetti	943-4328	janet.trombetti@planusa.org
Secretary	Ruth Bennett	724-7732	rbennett41@cox.net
Treasurer	Carolyn Traxler	783-5088	cctraxler@cox.net

CHAIRMEN

Arts	Sandra Pannone	245-1694	MISSBARR98@aol.com
By-laws	Judith Marak	783-4776	jcmarak@aol.com
Clerk/Communications	Janice Adler	383-0161	jladler@aol.com
Community Improvement Program	Ethel Dellasandro	942-6683	ejdri@hotmail.com
Conservation	Roberta Bianco	738-2791	robertabianco@cox.net
Day Of Service	Roberta Bianco	738-2791	robertabianco@cox.net
Day Of Service	Betty Challgren	941-1139	bmchallgren@aol.com
Education	Beverly Prestage	943-1031	bprestage@cpsed.net
Fundraising	TBA		
Home Life	Susan Porth	737-2651	susan_porth@hotmail.com
International Outreach	Ruth Bennett	724-7732	rbennett41@cox.net
Juniors' Special Project: Advocates for Children			
	Roberta Bianco	738-2791	robertabianco@cox.net
Leadership	Alexandra Hahn	521-1482	ahahn@textron.com
Meetings	Mary Irons	783-9538	mdirons@cox.net
NERC	Ethel Dellasandro	942-6683	ejdri@hotmail.com
NERC	Donna Gibb	647-0259	djgibb@cox.net
Parliamentary Advisor	Janice Adler	245-6584	jladler@aol.com
Public Issues	Millie Oziemblewski	728-7056	f.oziemblewski@gte.net
Signature Project: Domestic Violence	Judith Earle	736-5707	jearle@ebchouse.org
Sunshine	Ann Hogan	725-0846	
WHRC	Ann Hogan	725-0846	